

A stylized, colorful geometric illustration of a runner in motion, holding a compass. The runner is composed of various colored triangles in shades of blue, yellow, orange, and grey. The compass is a detailed illustration with a green lens and a red arrow pointing downwards.

MUBLOC

WORLD RANKING EVENT 2026

MAKOPALA UNIVERSITAS BUDI LUHUR ORIENTEERING CHAMPIONSHIP
BULLETIN 1 ENGLISH VER

Welcome to Indonesia and MUBLOC VI

With deep gratitude, I welcome all participants of the MAKOPALA Universitas Budi Luhur Orienteering Championship (MUBLOC) VI 2026 World Ranking Event.

It is an honor for us to welcome orienteering athletes from various regions and countries to gather and compete in Indonesia. On behalf of the entire organizing committee, I express my gratitude for the enthusiasm and support that has made this championship possible.

MUBLOC VI 2026 is not only a competition, but also an opportunity to share experiences, build friendships, and enjoy the orienteering matches we have prepared. We hope every participant will gain a memorable experience, both on and off the competition field.

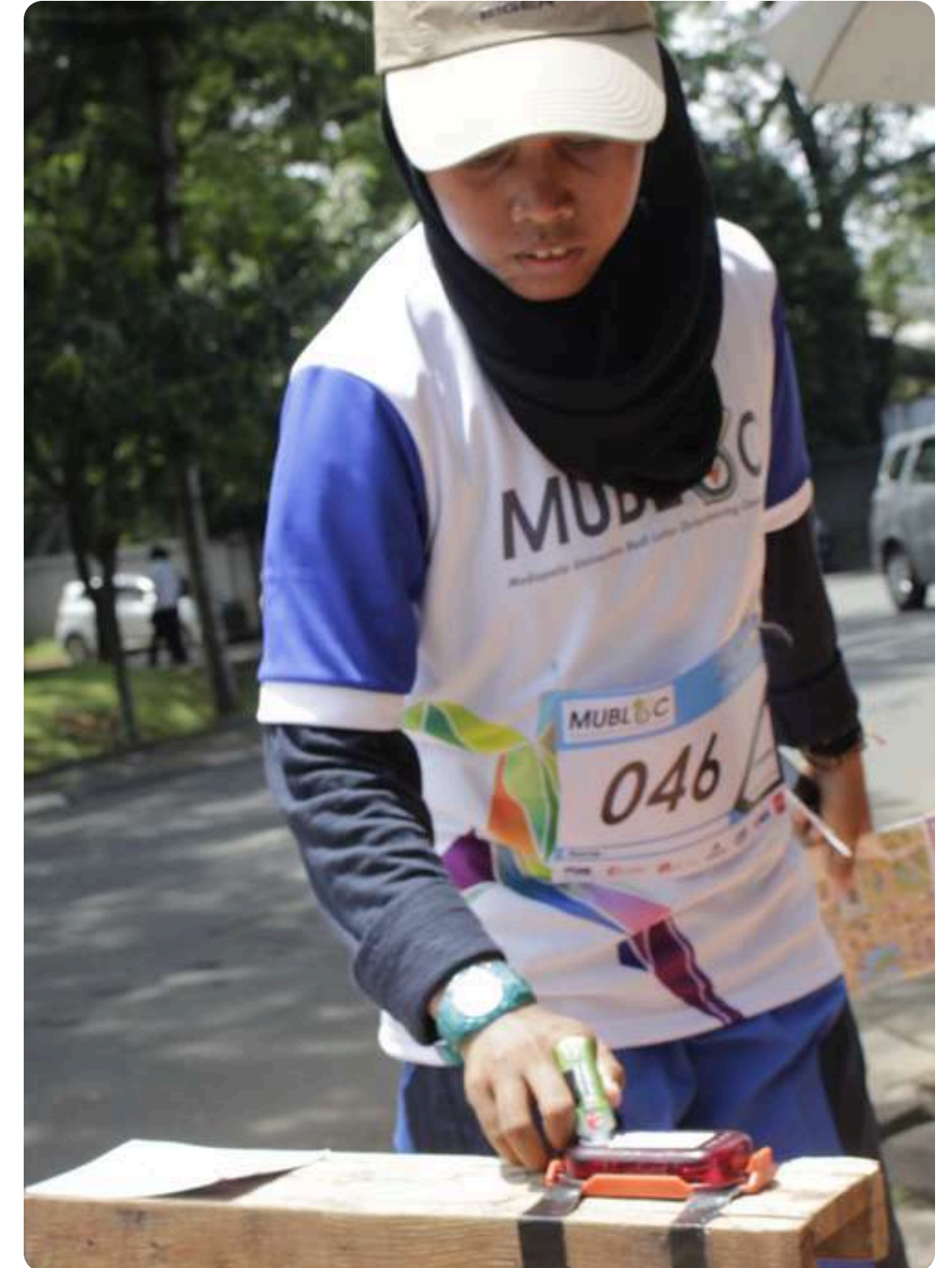
We also hope that participants can enjoy the beauty of Indonesia and get to know the cultural diversity we have to offer.

Thank you for being part of MUBLOC VI 2026. May this championship deliver competitive matches, enjoyable experiences, and unforgettable memories.

Welcome to Indonesia and good luck in the competition.

Siti Aisyah Ranukumbolo
Event Director

MUBLOC VI 2026 – World Ranking Event



What is MUBLOC

MAKOPALA Universitas Budi Luhur Orienteering Championship (MUBLOC) series VI is an orienteering competition organized by the student activity unit MAKOPALA of Universitas Budi Luhur for the 6th time, which is one of the pioneers of orienteering competitions in Indonesia. MUBLOC VI carries the theme: Eco Trail Challenge: Orienteering for preservation, sustainability and sport tourism. This aims to introduce orienteering as a competitive sport while also preserving the environment and promoting tourism in West Java and DKI Jakarta internationally through orienteering.



Event Information

Discipline type and competition type

MUBLOC VI is an orienteering competition with *foot orienteering discipline*. Participants may only walk, jog, and run during the competition. Motor vehicles, bicycles, electric bicycles, electric motorcycles, roller skates, skateboards, horses, pedicabs, and similar means of transportation are not permitted and are prohibited for use by participants during the competition.

Competition map

Sprint distance

Scale 1:4000

Contour interval 2 meters

Competition map drawing refers to ISSprOM 2019-2

Middle distance

Scale 1:10,000

Contour interval 5 meters

Competition map drawing refers to ISOM 2017

Estimated Winning Time

Sprint distance : 12-15 Minutes

Middle distance : 30-35 Minutes



Event Information

Punching and timing system

The timing system will use SPORTident which will be used for *Sprint* and *Middle distance*. Participants who have a dibber can inform the committee of their SiCard ID.

Clothing and footwear

There are no specific regulations regarding clothing during the competition. Participants may wear comfortable clothing for movement. Please wear comfortable and safe footwear to avoid injuries.

Water station

Water stations are only available for the *middle distance* category. For the *sprint distance* category, the committee only provides water at the finish area and quarantine.

Insurance

Each participant is expected to carry insurance/BPJS when participating in this event. Participants are responsible for their own insurance coverage (illness and accidents).

Visa

For visa requirement information, please visit the website <https://www.imigrasi.go.id/>



Organizers and Contact

**Chairman of MAKOPALA
Chairman of Committee
Event
Public Relations
Documentation
Publication
Consumption
Medical
Transportation and
Accommodation
Sponsorship**

Septi Isnandi
Siti Aisyah Ranukumbolo
Abu Dzar Al Ghifari
Assyifa Qolby Derry Aziba
Gigih Sehannoto
Yuniar Chandra Ningtyas
Ratu Hanum Adzannita
Allysa Nur Azizah
Assyifa Qolby Derry Aziba
Tatu Inggit Setiawan

Middle Distance

Event Controller Daniel Antonio Pereira (HKG)
iOF Event Adviser Rendra Agit Trisnawan

Sprint Distance

Event Controller Daniel Antonio Pereira (HKG)
iOF Event Adviser Syamsudin Zubair



Contact : +628561254172 (Assyifa)
Email : humasmakopala@gmail.com
Website : <https://mubloc.makopalaubl.or.id>.
Instagram : mubloc_2026

WOMEN

MEN

MUBLOC

Instagram
@mubloc2017
Facebook
Makopala Universitas
Orienteering Club
Twitter :
@Makopala_UBL
Website :
<http://makopala.org>

Event Schedule

Local
FOOD
bazaar

Supporting events

14 October 2026

Race Pack Collection

Decathlon Alam Sutera

16 October 2026

Re-registration

Kebun Raya Cibodas
(1:00 PM WIB - 6:00 PM WIB)
Budi Luhur Iniversity
(1:00 PM WIB - 4:00 PM WIB)

17 October 2026

- Opening Ceremony
- Middle Distance 07 am - 11 am

Kebun Raya Cibodas

18 October 2026

- Sprint Distance 07 am - 11 am
- Dash Dance Night (closing)

Budi Luhur University

Event Location - Middle Distance

Jl. Kebun Raya Cibodas, Desa Cimacan, Kecamatan Cipanas, Kabupaten Cianjur, Jawa Barat

GPS : 6°44'28"S 107°00'27"E

Terrain Characteristics of Cibodas Botanical Garden

Relief

The terrain consists of mountainous hills with gentle to moderate slopes, interspersed with some steeper areas. There is a good network of roads and paths as well as clear terrain details for navigation. The garden is approximately 1.300 - 1425 meters above sea level. often offering a cooler temperature as compared to Jakarta

Vegetation

A combination of open areas, botanical gardens, and mountain forest with generally good visibility. Some sections have denser undergrowth of ferns and shrubs.

Runnability

Generally good to very good. High running speed can be achieved in open areas and paths, while some forest sections with denser vegetation or steeper slopes have moderate runnability.



Event Location - Sprint Distance

Jl. Ciledug Raya, RT.10/RW.2, Petukangan Utara, Kec.
Pesanggrahan, Kota Jakarta Selatan, Daerah Khusus Ibukota
Jakarta

GPS : 6°14'10.48"S 106°44'50.51"E/6.2362444°S 106.7473639°E

Terrain Characteristics of Budi Luhur University

The sprint distance location is situated around Budi Luhur University and neighbouring areas. The terrain characteristics consist of residential areas, academic buildings, asphalt roads and footpaths with narrow alleys spread throughout the area.

The competition location is situated at an elevation of approximately 20-28 meters above sea level with a tropical climate.

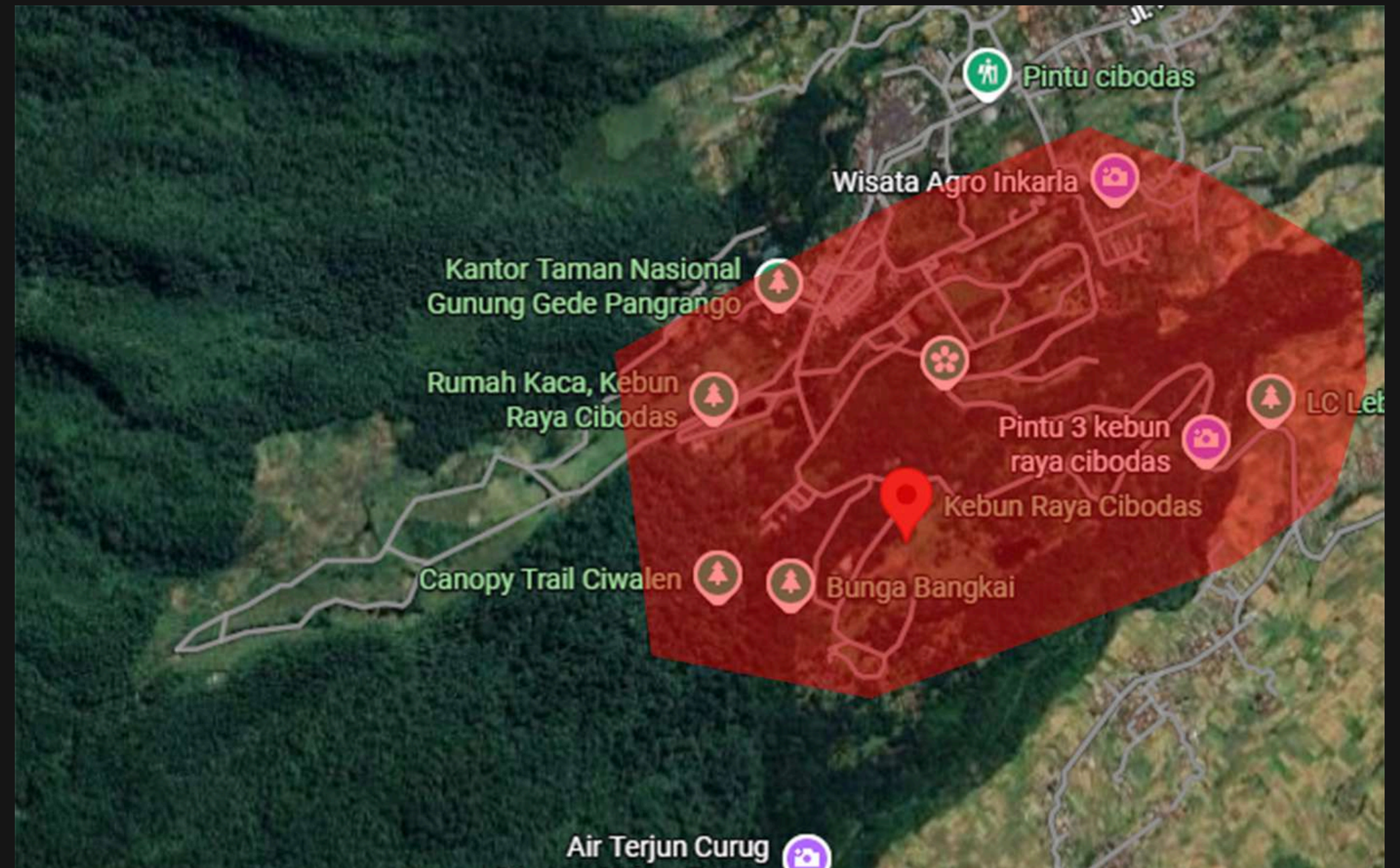
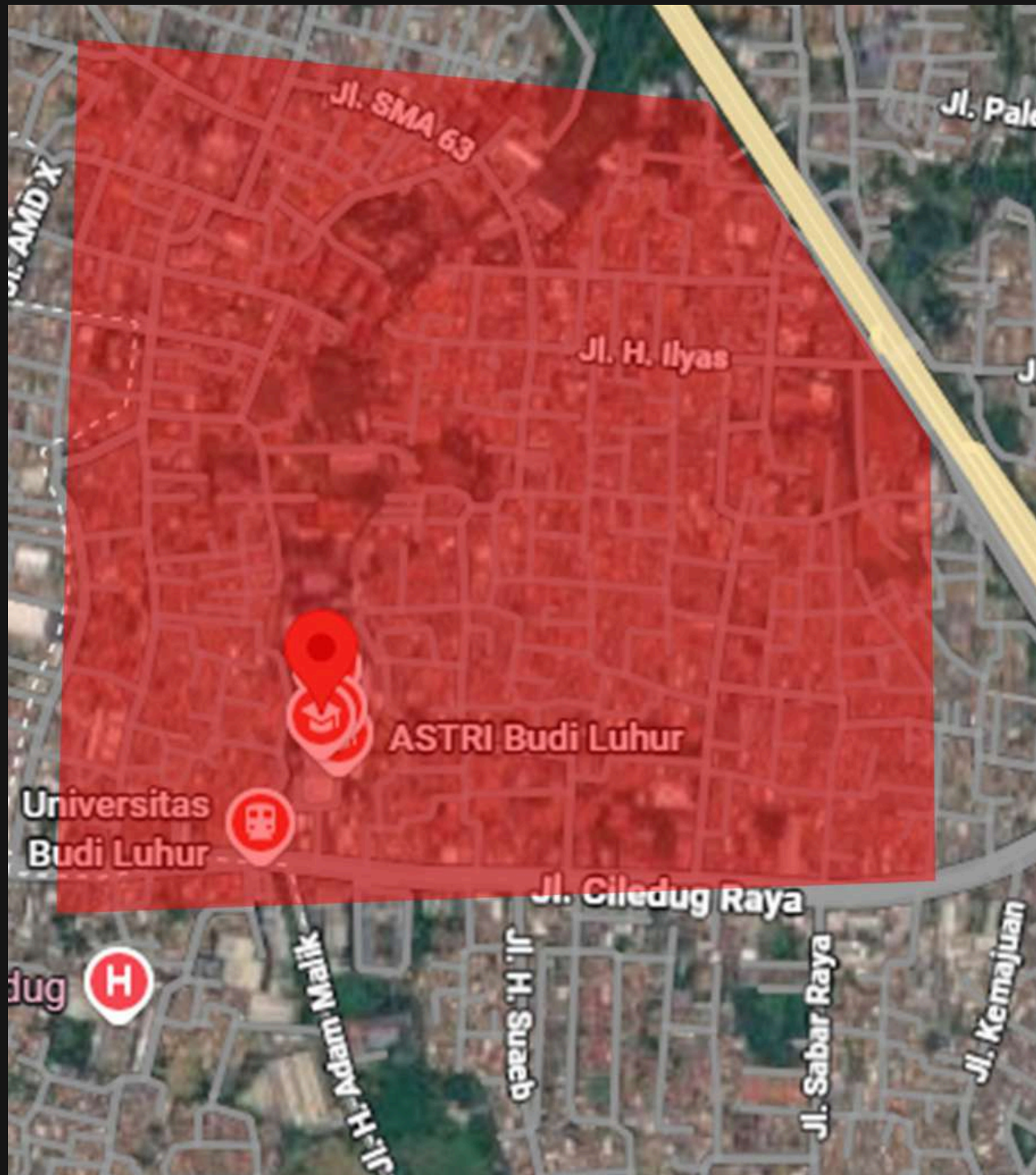
Runnability is generally very good, runners should pay attention when running in the narrow alleys and around sharp corners. (should also mention vehicular traffic is there is any)



Embargo area

The embargoed area is prohibited from being visited by all prospective athletes, coaches, officials, teams, and other persons who, through knowledge of the terrain and competition arena, could influence the competition results

Visits to the embargoed area may only be conducted with clear information and permission from the organizing committee



Competition Classes

CLASS

DESCRIPTION

M21E - WRE

Age 21 years and above

W21E - WRE

Age 21 years and above

M20

Under 21 years old

W20

Under 21 years old

M21N (Novice)

For beginner participants

W21N (Novice)

For beginner participants

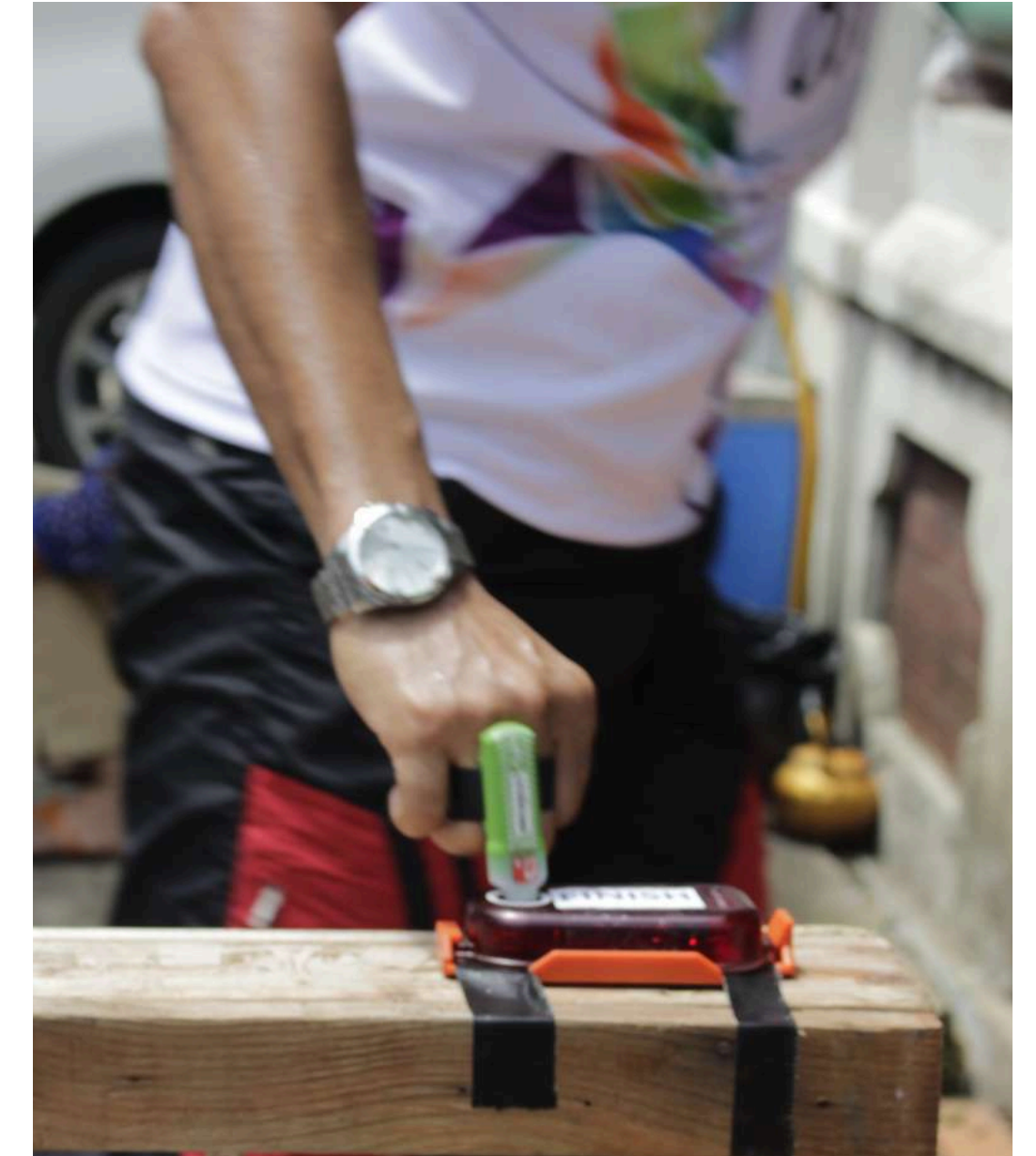
NOTE:

- WRE participants must have an IOF ID
IOF ID registration through IOF Eventor
All registration processes are done on
the - MUBLOC website.
- Classes M21E and W21E are also
eligible for Asian Orienteering Cup 2026
for both races



Registration Fee

Class	Description	Local	Foreign
M21E	Age 21 years and above	Rp. 600.000	Rp. 1.300.000
W21E	Age 21 years and above	Rp. 600.000	Rp. 1.300.000
M20	Under 21 years old	Rp. 350.000	Rp. 1.300.000
W20	Under 21 years old	Rp. 350.000	Rp. 1.300.000
M21N (Novice)	Beginner	Rp. 300.000	
W21N (Novice)	Beginner	Rp. 300.000	



Price listed includes 2 races

Note: All registration and payment processes are done on the website <https://mubloc.makopalaubl.or.id>. Registration opens from July 1, 2026 to October 7, 2026, and payment must be completed by October 7, 2026.

Participants who have completed payment will receive a BIB number and QR code sent via email or their participant account on the website <https://mubloc.makopalaubl.or.id>. The QR code is valid for all administrative purposes (race pack collection, re-registration, meals)

MUBLOC VI Registration Procedure

01 Website <https://mubloc.makopalaubl.or.id>.

Participants are required to have an account on the MUBLOC website. After registering an account, proceed to register in the registration menu. WRE participants must have an IOF ID.

Participants are then required to take a screenshot or other proof for subsequent registration on the website

Website <https://mubloc.makopalaubl.or.id/>

02 IOF EVENTOR

WRE participants are required to first register through IOF Eventor.

If participants do not yet have an IOF ID, they can register at <https://eventor.orienteering.sport/Register>

Middle Distance <https://eventor.orienteering.sport/Events/Show/9011>

Sprint Distance <https://eventor.orienteering.sport/Events/Show/9010>

03 QR Code

After participants register on IOF and complete all processes on the MUBLOC website including payment approval, they will receive a QR code sent to their MUBLOC account and registered email. This QR code is used for all administrative purposes (race pack collection, re-registration, meals)

Website <https://mubloc.makopalaubl.or.id/>

Transportation and Accommodation

Budi Luhur University as the venues for MUBLOC VI 2026 has relatively easy access for participants from both local and outside areas. Both locations can be reached using various modes of transportation, such as trains, intercity buses, private vehicles, and online transportation services (Grab, Gojek, and online taxis). Good road access and the availability of supporting transportation facilitate the mobilization of participants to the competition arena, activity center, and accommodation locations around the venue.

Getting to Cibodas Botanical Garden by car may be challenging due to frequent traffic jams and one-way traffic controls on the only main road between Ciawi and Puncak with short notice, especially during weekends. Participants traveling by car should pay attention to the local police announcements.

We provide bus transportation for departure to Cibodas Botanical Garden and return to Budi Luhur University. The bus we provide has a capacity of only 38 seats.

Bus schedule

Day, date : Friday, October 16, 2026

Time : 4:00 PM WIB

Day, date : Saturday, October 17, 2026

Time : 2:00 PM WIB

Note : to get a seat, registration will be opened on the MUBLOC website. Seat allocation will be on a first-come, first-served basis



Transportation and Accommodation

Middle Venue Accessibility

Cibodas Botanical Garden

Jl. Kebun Raya Cibodas, Sindangjaya, Cipanas District, Cianjur Regency, West Java

Arrival Point / Transportation Distance

Airplane ± 120 km

Soekarno-Hatta International Airport ± 89 km

Halim Perdana Kusuma Airport

Train ± 50 km

Bogor Station (KRL)

Cianjur Station

Bus ± 7 km

Cipanas Terminal

KRL Commuter Line, alight at Bogor Station then continue with Taxi, Grab, Gojek, and online transportation services available 24 hours.



Urbanview Hotel Mon Bel Cibodas (1 km)

Jl. Kebun Raya Cibodas No.131, Cimacan, Kec. Cipanas, Kabupaten Cianjur, Jawa Barat



Urbanview Hotel Nerine Glamping Village Cipanas (2,5 km)

Jl. Gn. Putri, Sukatani, Kec. Pacet, Kabupaten Cianjur, Jawa Barat



RedDoorz Syariah Plus at cipanas Cianjur (3 km)

Jl. Gn. Putri No.99, Sukatani, Kec. Cipanas, Kabupaten Cianjur, Jawa Barat

Transportation and Accommodation

Sprint Venue Accessibility

Budi Luhur University

Jl. Ciledug Raya, Pesanggrahan, South Jakarta

Arrival Point / Transportation Distance

Airplane

Soekarno-Hatta International Airport ± 27 km

Halim Perdana Kusuma Airport ± 25 km

Train

Gambir Station ± 19 km

Pasar Senen Station ± 24 km

Pondok Ranji Station (nearest station) ± 5,5 km

Palmerah Station ± 11 km

ASEAN MRT Station ± 9 km

Bus

Kampung Rambutan Terminal ± 20 km

Kalideres Terminal ± 20 km

Lebak Bulus Terminal ± 8 km

Public Transportation Access

KRL Commuter Line via Kebayoran Station.

TransJakarta main corridor in South Jakarta connected to the Kebayoran area.

MRT Jakarta via ASEAN Station integrated with connecting transportation.

Taxi, Grab, Gojek, and online transportation services available 24 hours.



Astana Raya Hotel (450 m)

Jl. Ciledug Raya No.17, RT.001/RW.002, Kreo Selatan,
Kec. Larangan, Kota Tangerang, Banten



Kebayoran Park hotel (2,5 km)

Jl. Ciledug Raya No.1, RT.9/RW.5, Ulujami, Kec.
Kebayoran Lama, Kota Jakarta Selatan



Arosa Hotel (4,9 km)

Jl. RC. Veteran Raya No.3, RT.9/RW.3, Bintaro, Kec.
Pesanggrahan, Kota Jakarta Selatan,

Training Opportunity

The training opportunity will be held on Friday, October 16, 2026. During this activity, participants will be given the opportunity to use the electronic punching system





Thank You

See you at the finish line!

[HTTPS://MUBLOC.MAKOPALAUBL.OR.ID.](https://mubloc.makopalaubl.or.id)

+628561254172 (ASSYIFA)

HUMASMAKOPALA@GMAIL.COM